

Supplementary Figure legends:

Figure S1. Plasma VWF (% compared with WT mice) level. *Vwf*^{-/-} mice were infused intravenously with 150 µl citrated WT plasma and VWF levels were measured by ELISA at 1, 4 and 24 hours. N=3 at each time point.

Figure S2. VWF neutralization by anti-VWF antibodies increases bleeding time in WT and *Adamts13*^{-/-} mice. Tail-bleeding time measurements show significantly increased bleeding in anti-VWF Ig-treated mice WT or *Adamts13*^{-/-} compared with control Ig-treated mice WT or *Adamts13*^{-/-} after 30 minutes of ischemia and 23.5 hours of reperfusion. N=7-9 /group.

Figure S1

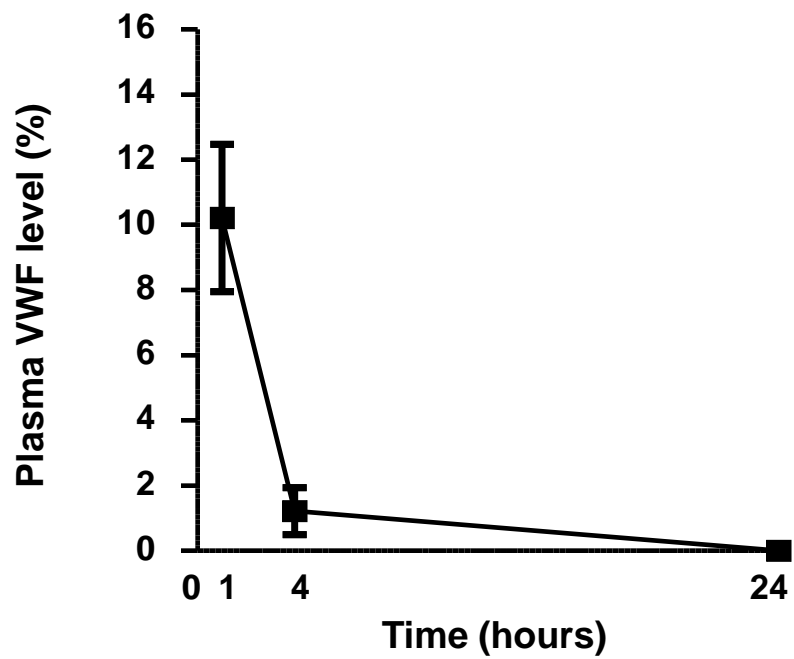


Figure S2

